

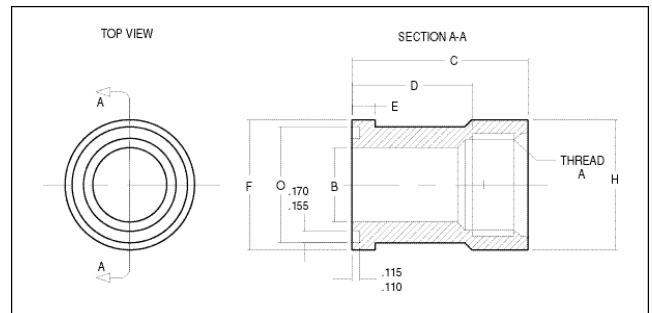
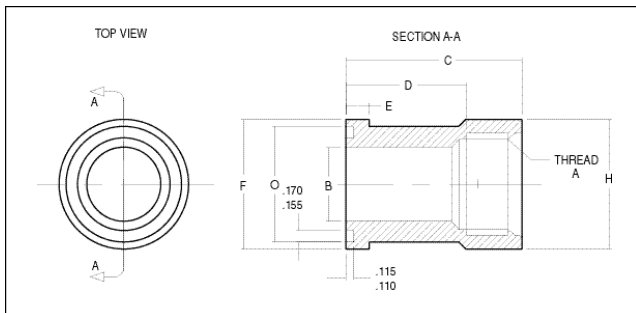
SAE Flange Heads For Brazing

STANDARD PRESSURE : CODE 61

FLANGE SIZE	TUBE SIZE	O-RING GROOVE PART NO.	FACE FLAT PART NO.	+.003/- .000								MIN O	MAX O	WT
				A	B	C	D	E	F	H				
1/2"	1/2"	13090-08-08	13091-08-08	0.502	0.406	0.50	0.312	0.265	1.188	0.940	1.000	1.005	0.12	
3/4"	3/4"	13090-12-12	13091-12-12	0.752	0.656	0.56	0.375	0.265	1.500	1.250	1.250	1.255	0.19	
1"	1"	13090-16-16	13091-16-16	1.002	0.906	0.56	0.375	0.315	1.750	1.500	1.560	1.565	0.22	
1 1/4"	1 1/4"	13090-20-20	13091-20-20	1.252	1.125	0.56	0.375	0.315	2.000	1.700	1.750	1.755	0.25	
1 1/2"	1 1/2"	13090-24-24	13091-24-24	1.502	1.375	0.62	0.438	0.315	2.380	1.980	2.115	2.125	0.31	
2"	2"	13090-32-32	13091-32-32	2.002	1.875	0.62	0.500	0.375	2.810	2.450	2.490	2.500	0.44	
2 1/2" ¹	2 1/2"	13090-40-40	13091-40-40	2.502	2.375	0.68	0.562	0.375	3.312	2.921	2.995	3.005	0.98	
3" ²	3"	13090-48-48	13091-48-48	3.002	2.875	0.75	0.562	0.375	4.000	3.546	3.615	3.625	1.47	

HIGH PRESSURE : CODE 62

FLANGE SIZE	TUBE SIZE	O-RING GROOVE PART NO.	FACE FLAT PART NO.	+.003/- .000								MIN O	MAX O	WT
				A	B	C	D	E	F	H				
3/4"	3/4"	16090-12-12	16091-12-12	0.752	0.656	0.69	0.500	0.345	1.625	1.250	1.250	1.255	0.19	
1"	1"	16090-16-16	16091-16-16	1.002	0.810	0.81	0.625	0.375	1.875	1.500	1.560	1.565	0.31	
1 1/4"	1 1/4"	16090-20-20	16091-20-20	1.252	1.010	1.00	0.812	0.405	2.125	1.718	1.750	1.755	0.44	
1 1/2"	1 1/2"	16090-24-24	16091-24-24	1.502	1.250	1.19	1.000	0.495	2.500	2.000	2.115	2.125	0.69	
2"	2"	16090-32-32	16091-32-32	2.002	1.750	1.50	1.375	0.495	3.125	2.620	2.490	2.500	1.25	



NPTF Threaded Flange Heads

STANDARD PRESSURE : CODE 61

FLANGE SIZE	PIPE SIZE	PART NO.	THREAD (NPTF)		C	D	E	F	H	MIN O	MAX O	WT
			A	B								
3/4"	3/4"	13076-12-12	3/4"	0.75	2.47	1.62	0.265	1.500	1.500	1.250	1.255	0.75
1"	1"	13076-16-16	1"	1.00	2.66	1.62	0.315	1.750	1.750	1.560	1.565	0.81
1 1/4"	1 1/4"	13076-20-20	1-1/4"	1.25	2.84	1.81	0.315	2.000	2.000	1.750	1.755	0.98
1 1/2"	1 1/2"	13076-24-24	1-1/2"	1.50	3.00	2.00	0.315	2.380	2.375	2.115	2.125	1.41
2"	2"	13076-32-32	2"	2.00	3.00	2.00	0.375	2.810	2.812	2.490	2.500	1.78

¹ 2500 PSI max.

² 2000 PSI max.

S.A.E. Threaded Flange Heads

STANDARD PRESSURE : CODE 61

FLANGE SIZE	TUBE SIZE	PART NO.	THREAD (S.A.E.)		C	D	E	F	H	MIN O	MAX O	WT
			A	B								
3/4"	3/4"	13128-12-12	1 1/16-12	0.75	2.47	1.62	0.265	1.500	1.500	1.250	1.255	0.74
1"	1"	13128-16-16	1 5/16-12	1.00	2.66	1.62	0.315	1.750	1.750	1.560	1.565	0.80
1 1/4"	1 1/4"	13128-20-20	1 5/8-12	1.25	2.84	1.81	0.315	2.000	2.000	1.750	1.755	0.97
1 1/2"	1 1/2"	13128-24-24	1 7/8-12	1.50	3.00	2.00	0.315	2.380	2.375	2.115	2.125	1.40
2"	2"	13128-32-32	2 1/2-12	2.00	3.00	2.00	0.375	2.810	2.812	2.490	2.500	1.77