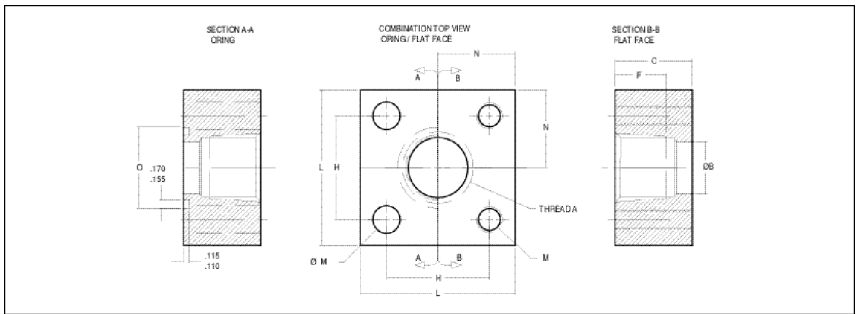


4-Bolt Square, Socket Weld Pipe Flanges

3000 Series

FLANGE SIZE	PIPE SIZE	O-RING GROOVE PART NO.	FLAT FACE PART NO.	A	B	C	F	H	L	DRILLED TAPPED DIA. UN-2B				MOUNTING KIT INFORMATION			
										M	M	N	O	PART NO. ¹	O-RING	SHCS	WT
1/2"	1/2"	13616-08-08	13617-08-08	0.860	0.50	1.00	0.50	1.438	2.25	0.41	3/8-16	1.12	1.375	SKQ1-080	-216	3/8-16x1-3/4	1.20
3/4"	3/4"	13616-12-12	13617-12-12	1.070	0.75	1.00	0.50	1.438	2.25	0.41	3/8-16	1.12	1.375	SKQ1-100	-216	3/8-16x1-3/4	1.00
1"	1"	13616-16-16	13617-16-16	1.335	1.00	1.00	0.50	2.000	3.00	0.53	1/2-13	1.50	1.750	SKQ1-102	-222	1/2-13x1-3/4	2.00
1 1/4"	1 1/4"	13616-20-20	13617-20-20	1.680	1.25	1.00	0.50	2.000	3.00	0.53	1/2-13	1.50	1.750	SKQ1-104	-222	1/2-13x1-3/4	1.70
1 1/2"	1 1/2"	13616-24-24	13617-24-24	1.920	1.50	1.25	0.62	2.750	4.00	0.66	5/8-11	2.00	2.500	SKQ1-106	-228	5/8-11x2-1/4	4.20
2"	2"	13616-32-32	13617-32-32	2.411	1.94	1.25	0.62	2.750	4.00	0.66	5/8-11	2.00	2.500	SKQ1-108	-228	5/8-11x2-1/4	3.70
2 1/2"	2 1/2"	13616-40-40	13617-40-40	2.911	2.44	1.50	0.75	3.750	5.50	0.94	7/8-9	2.75	3.500	SKQ1-110	-236	7/8-9x2-3/4	9.20
3"	3"	13616-48-48	13617-48-48	3.540	2.88	1.50	0.75	3.750	5.50	0.94	7/8-9	2.75	3.500	SKQ1-112	-236	7/8-9x2-3/4	8.00
3 1/2"	3 1/2"	13616-56-56	13617-56-56	4.045	3.38	1.75	0.75	4.250	6.00	0.94	7/8-9	3.00	4.000	SKQ1-114	-240	7/8-9x3	11.00
4"	4"	13616-64-64	13617-64-64	4.550	3.88	2.00	0.75	5.000	7.00	1.06	1-8	3.50	4.625	SKQ1-116	-347	1-8x3-1/2	18.00



4-Bolt Square, NPTF Threaded Pipe Flanges

3000 Series

FLANGE SIZE	PIPE SIZE	O-RING GROOVE PART NO.	FLAT FACE PART NO.	THREAD (NPTF)		C	F	H	L	DRILLED TAPPED DIA. UN-2B				MOUNTING KIT INFORMATION			
				A	B					M	M	N	O	PART NO. ¹	O-RING	SHCS	WT
1/2"	1/2"	13608-08-08	13609-08-08	1/2"	0.50	1.25	1.06	1.438	2.25	0.41	3/8-16	1.12	1.375	SKQ2-080	-216	3/8-16x2	1.50
3/4"	3/4"	13608-12-12	13609-12-12	3/4"	0.75	1.25	1.06	1.438	2.25	0.41	3/8-16	1.12	1.375	SKQ2-100	-216	3/8-16x2	1.40
1"	1"	13608-16-16	13609-16-16	1"	1.00	1.50	1.25	2.000	3.00	0.53	1/2-13	1.50	1.750	SKQ2-102	-222	1/2-13x2-1/4	3.10
1 1/4"	1 1/4"	13608-20-20	13609-20-20	1 1/4"	1.25	1.50	1.31	2.000	3.00	0.53	1/2-13	1.50	1.750	SKQ2-104	-222	1/2-13x2-1/4	2.70
1 1/2"	1 1/2"	13608-24-24	13609-24-24	1 1/2"	1.50	1.75	1.31	2.750	4.00	0.66	5/8-11	2.00	2.500	SKQ2-106	-228	5/8-11x2-3/4	6.20
2"	2"	13608-32-32	13609-32-32	2"	1.94	1.75	1.31	2.750	4.00	0.66	5/8-11	2.00	2.500	SKQ2-108	-228	5/8-11x2-3/4	5.50
2 1/2"	2 1/2"	13608-40-40	13609-40-40	2 1/2"	2.44	2.25	1.84	3.750	5.50	0.94	7/8-9	2.75	3.500	SKQ2-110	-236	7/8-9x3-1/2	14.00
3"	3"	13608-48-48	13609-48-48	3"	2.88	2.25	1.91	3.750	5.50	0.94	7/8-9	2.75	3.500	SKQ2-112	-236	7/8-9x3-1/2	12.80

¹ Add a "K" to flange part # to include mounting hardware